

STAINLESS INDIA

A MAGAZINE PUBLISHED BY

**Indian Stainless Steel
Development Association**

K-36 (FF), Hauz Khas Enclave, New Delhi - 110 016



Tel: +91 11 2686 5631 / 3389

Fax: +91 11 2686 3376

E-mail: nissda@gmail.com

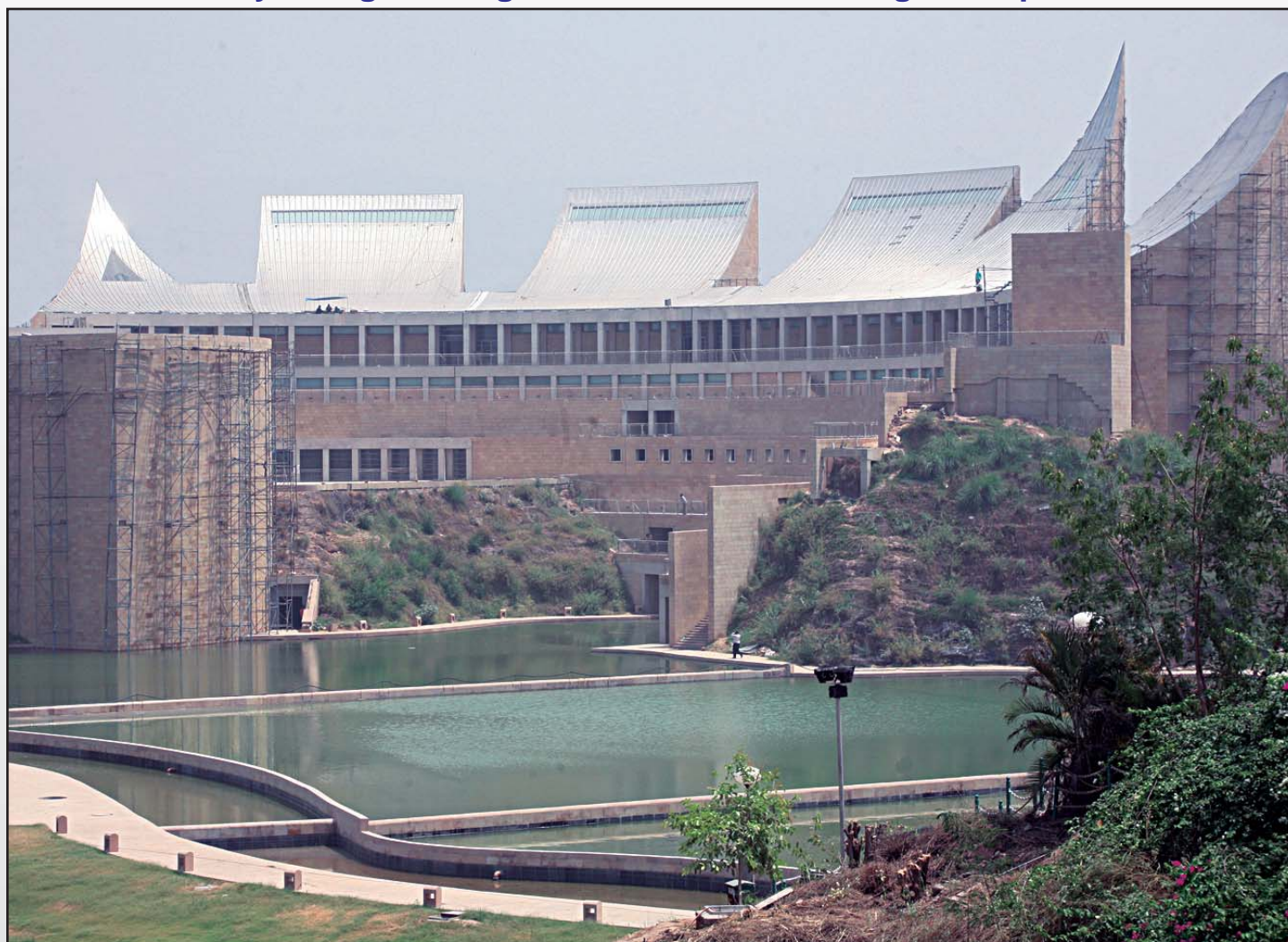
Web: www.stainlessindia.org

VOL.13 NO. 3

Published four times a year

June 2008

Day & Night Images of the Khalsa Heritage Complex



Photos: Courtesy Anandpur Sahib Foundation, Chandigarh.

Project: Khalsa Heritage Complex to commemorate the 300th year of the Khalsa. There are 10 main blocks. One block dedicated to each Guru.

Client: M/s Anandpur Sahib Foundation, Chandigarh.

Location: Anandpur Sahib. District Ropar, Punjab

Principal Architect: M/s Moshe Safdie Associates, USA.

Associate Architect: M/s Ashok Dhawan Associates, New Delhi.

Area of roofing : 4250 sqm of roofing +gutters, skylights and perimeter cladding

Duration of Project: 16 months.

Fabricator: M/s Sreevatsa Stainless Steel Fabricators (P) Ltd., Chennai.

Stainless steel escalators for more cities - Delhi, Chennai, Jaipur and Tiruchi -



Out of the twelve foot over bridges (FOBs) that have been commissioned in Delhi; six are fitted with stainless steel escalators. Delhi will soon have 20-25 more foot over bridges with escalators. The cost of these FOBs with escalators is around Rs. 3.8 crore; without escalators it works out to Rs. 1.3 crore.

Apart from Delhi, other cities like Chennai, Tiruchi and Jaipur are also going for foot over bridges with escalators. In Chennai, about 10 such foot over bridges with escalators will come up shortly. Tiruchi and Jaipur will have four each. This trend is likely to be replicated in many other cities.

An FOB with escalator clad in stainless steel under construction at Dhaula Kuan, New Delhi.



Escalator installed at outside entrance at M/s Unitech, Rohini, Delhi

Not only the Government Private Developers are also doing it!

Many Private companies are also installing stainless steel escalators for their outside entrance. One such escalator installed at M/s Unitech, Rohini is shown in the picture. This is fabricated by M/s Tarini Engineering Pvt Ltd, 17 B, Waghela Bhuvan, J P Nagar, Road No.1, Opp. Canara Bank, Goregaon (E), Mumbai – 400 060, Tel: 022-6452 6397, Fax: 022-2685 5027, Email: tariniengineering@rediffmail.com, Website: www.tariniengineering.net

PRAKASH STEELAGE LTD (MUMBAI) IN TUBE 2008

Report spurt in export orders



Shri Prakesh C Kanugo, CMD of M/s Prakash Steelage Ltd at the International Tube and Pipe Trade Fair, Dusseldorf, Germany

Recently, M/s Prakash Steelage Ltd participated in the Tube 2008 International Tube and Pipe Trade Fair held in Dusseldorf, Germany from 31st March to 4th April, 2008.

Experts from all over the world attended this exhibition to gather information on the latest trends in the areas of raw materials, tubes, and accessories, machinery for the production of tubes, used machines, process technology, test engineering, pipeline and OCTG technology, special areas as well as innovations from the tube trade, and also to close business deals.

During last one decade, M/s Prakash Steelage Ltd has participated in many international trade fairs and gained a good reputation in many countries. In this fair, visitors and organizers appreciated the attractive stall put up by M/s Prakash Steelage Ltd. After participating in this fair there is a spurt in their export orders within a short span of time.

Contact: Mr Kamal Kanugo, Export Director, M/s Prakash Steelage Ltd, 701, Mahalaxmi Chambers, Bhulabhai Desai Road, Mumbai - 400 026, Tel: 022-6613 4500, Fax: 022-2352 6576, E-mail: kpk@prakashsteelage.com, Website: www.prakashsteelage.com

Modern Abattoir in Ghazipur, New Delhi

In what is probably the first ever modern abattoir in the country, the Municipal Corporation of Delhi (MCD) has established a Modern Abattoir at Ghazipur, on the outskirts of New Delhi near its border with Ghaziabad in Uttar Pradesh.

The purpose of establishing a modern abattoir was dictated by the need of the city to do away with the unhygienic, floor slaughtering, 150-year old butchery located in heart of city at Idgah. This butchery do not have any hygienic environment for supplying wholesome meat to Delhi residents. More important is the indiscriminate waste disposal which invites all sorts of carnivorous birds and beasts at various collection points. These invariably lead to a very unhealthy environment for the citizens.

The important feature of the abattoir is that everything in the premises is done in a climate-controlled environment with hygiene as the most important element. Starting from the beasts to the equipment and operators, every element is cleaned, sterilized and sanitized before the start of each shift with modern equipment. Similar to an operation theatre, those entering the operational area of the abattoir have to wear completely sterilized overalls, gloves, boots and helmets. There hardly any waste as such. The little waste generated is again is disposed



Trays on conveyors to carry offals



Automatic Hook Return Conveyors

off in an environmentally friendly manner.

This level of hygiene and cleanliness cannot be maintained without stainless steels which are easily cleanable and are the preferred material for hospitals and operation theatres. All food contact surfaces of the equipment is of stainless steel grade 304.

The abattoir is designed and established on turnkey basis by M/s Food Processing Equipment Company having its branch office in Mayur Vihar – I, Delhi and corporate office at 447, Udyog Vihar – III, Gurgaon, Haryana. Most of the equipments were imported from Germany and France.



Drain with grating in stainless for corrosion-free clean floors



Staircases with non-skid steps of stainless steel

The abattoir has completed the successful trial operations, the capacity of this plant is 5000 animals in one shift.

For contact details, click 'Our Members' in the homepage at www.stainlessindia.org

Click 'Supply Chain' in the homepage for category-wise lists of suppliers of various stainless steel products & services

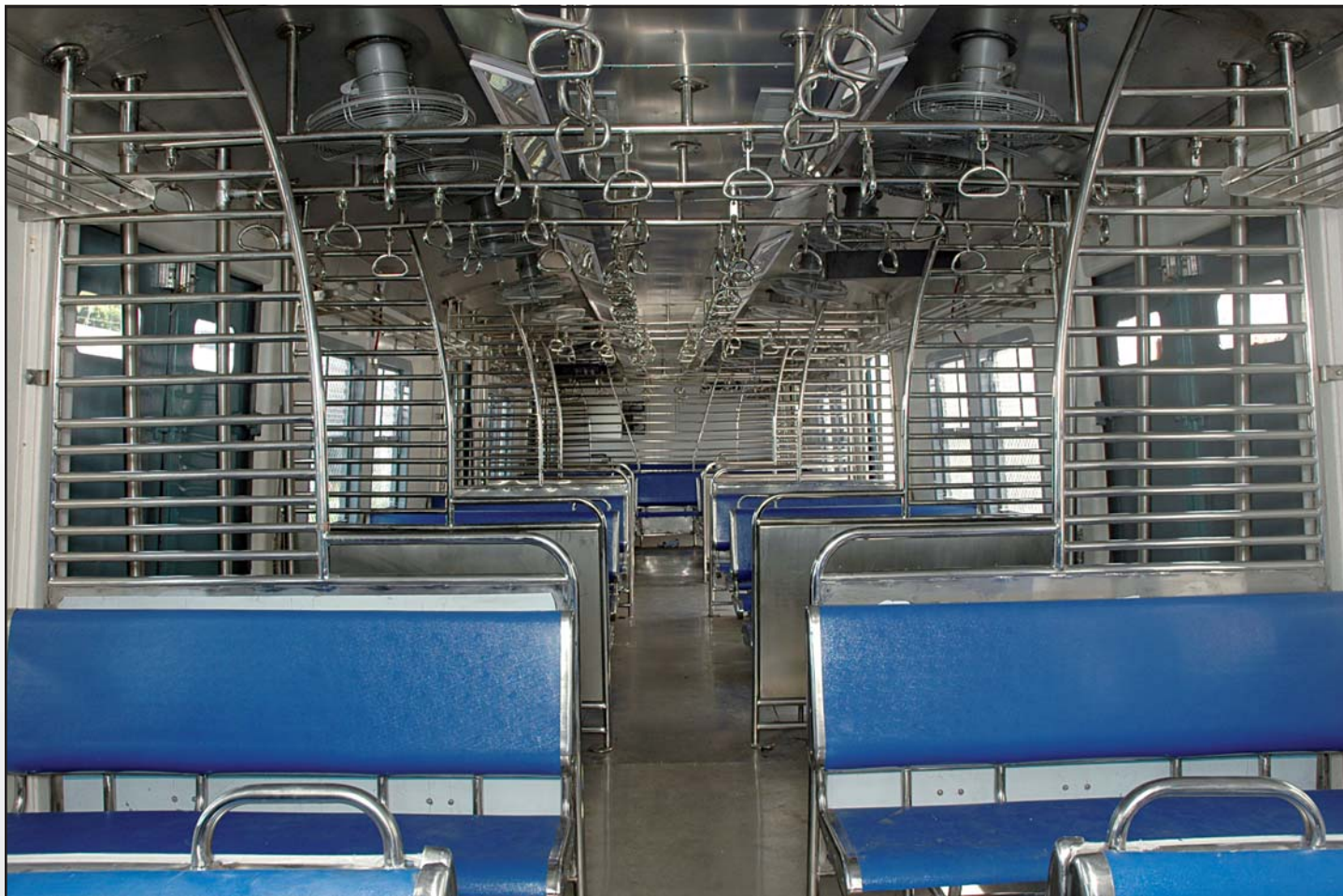
Would you like to feature your stainless steel products / services in STAINLESS INDIA? Send us your write-up along with attractive colour images

DISCLAIMER

Drawings / photographs of equipment, machinery, products and services in STAINLESS INDIA are for illustrative purposes only and their inclusion does not constitute or imply any endorsement, of the items or the companies that manufacture or distribute them, by ISSDA and its staff.

Utmost effort is put into ensuring that there is no infringement of copyright or IPR. In spite of our best efforts, sometimes incorrect information creeps in, mainly because we have faith in those who contribute articles/images for us. Any such error, if at all, is deeply regretted. If pointed out, we have no qualms in admitting our error and publish an apology in an effort to appease the aggrieved party.

MRVC Coaches Use 2.5 Tonnes of Stainless Steel for Internal Furnishing



Mumbai Rail Vikas Corporation (MRVC) will buy about 1,500 coaches from Integral Coach Factory (ICF), Chennai. The interiors of these coaches are made of stainless steel. About 2.5 tonnes of stainless steel

is being used per coach. Stainless steel has been used for roof paneling, seat frames, handholds, luggage racks, fans, partitions, doorway grab poles, protective wire screen and rainwater gutter.

Photos courtesy: Integral Coach Factory (ICF), Chennai

New Wagon in 409M by Golden Rock Railway Workshop Weighs 8.7 tonnes



Unpainted sides of 409M wagon prototype



Painted sides of the same 409M wagon prototype

(Photos courtesy Golden Rock Wagon Workshop)

The Golden Rock Workshop of Southern Railway located near Tiruchy, Tamil Nadu, is one of the wagon workshops of the Indian Railways. In FY 2008-09 they have received an order for manufacture of 240 wagons in 409M. Each wagon uses 8.7 tonnes of stainless steel.

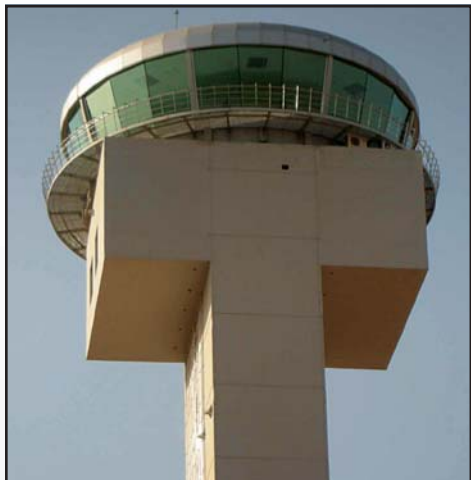
ISSDA held one workshop at their facility in July 2007 on fabrication methods for the job. This was done by our consultant Mr. K R Ananthanarayanan of Bangalore.

A follow-up visit in May 2008 threw up a very pleasant surprise. Whereas ISSDA was invited to inspect the wagons and recommend improvements, we found that they had gone by the book on every step of fabrication, cleanliness, isolation of stainless steel from carbon steel fabrication area etc. The fabrication quality was excellent.

However, they do have a problem: that of suppliers for small assemblies in 409M; for example the ladder. Since long products were not available in 409M, they used 304. In order to cut costs, as an alternative, we have suggested using long products in 410 S grade for these sub-assemblies.

Log on to :www.STAINLESSINDIA.ORG for a list of components needed for wagons. URGENT!!!

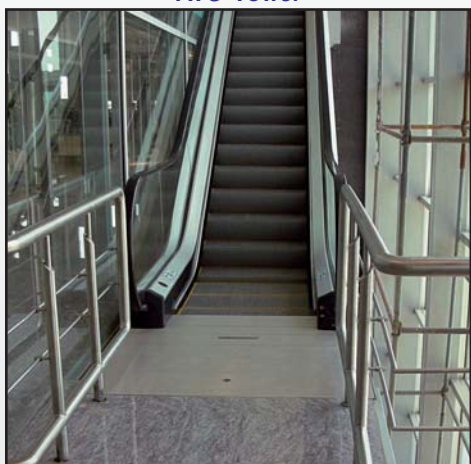
STAINLESS USAGE IN THE NEW BANGALORE INTERNATIONAL AIRPORT



ATC Tower



Closer view of ATC tower -- stainless steel railings



Escalator



Emigration counters



Stair case



Escalators - railings



Signage

Fabricator : M/s Jindal Architecture Limited
 Plot No. 64 & 65, Udyog Vihar, Phase-IV
 Gurgaon 122 016, Haryana
 Mr Achal Puri, Mob : 91-98713 87021
 Mr Chirdeep Dhawan, Mob : 91-98101 12929



Ambica Steels Limited

Ambica Steels Limited is a Primary Member of ISSDA producing long products. In their new office building in Sahibabad in the outskirts of Delhi, they have used stainless steel long products for their interiors. Here are a few photos of imaginative use of long products for interior decoration.

Architect : Ms Archna Sachdeva



Pillar and Table Top Light Stands

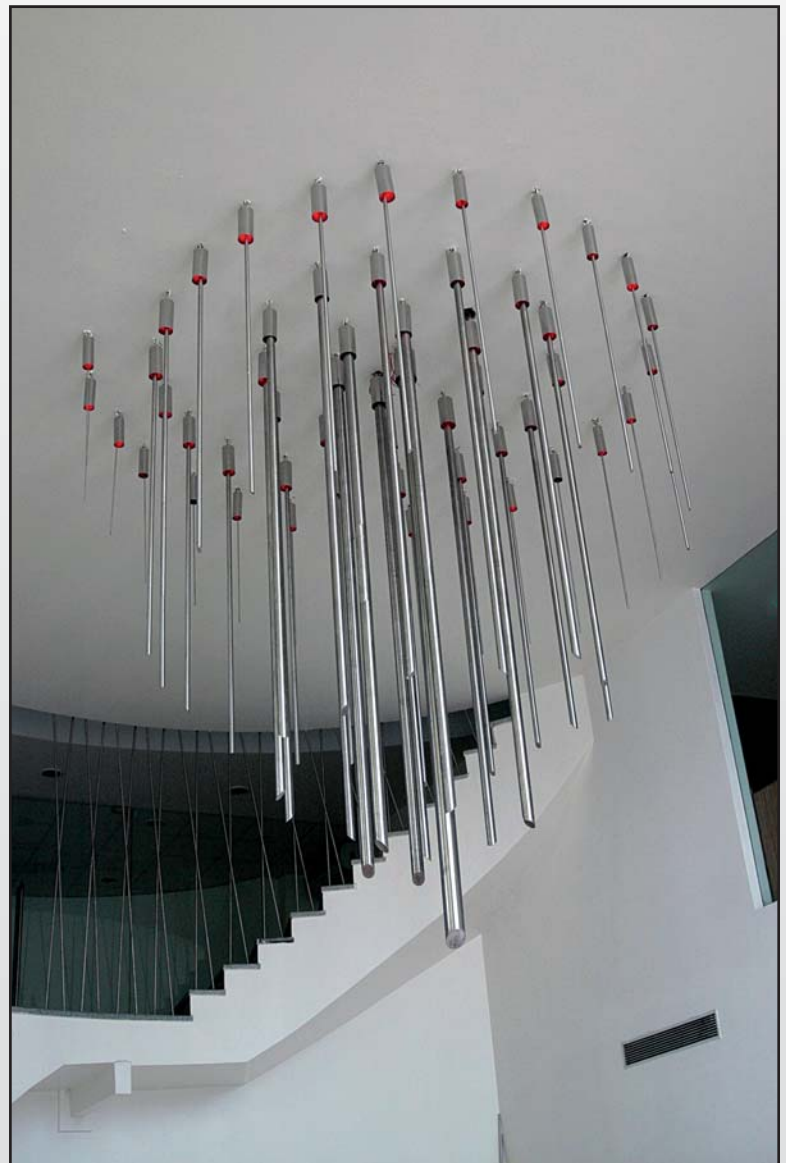


Table Bottom

Ambica Steel's Office Interiors



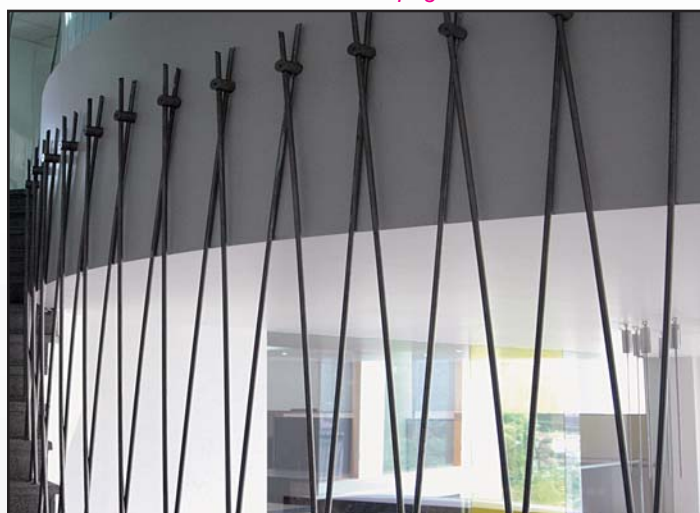
Door Handles



Stainless Chandelier

Photos printed with permission of M/s Ambica Steels Ltd

Contd.. on page 8



Glass Protectors

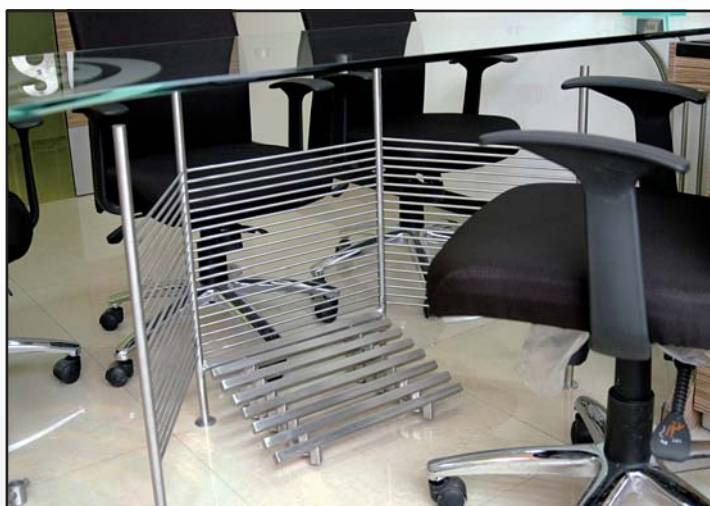


Table bottom and leg rest

Global stainless steel production recovers in Q1 2008

According to preliminary figure, global stainless steel production was 7.4 million metric tons (mmt) in the first quarter of 2008. The figures, published by the International Stainless Steel Forum (ISSF), show that stainless steel production increased by 6.5% compared to the last quarter of 2007.

All areas of the world increased production compared to the last quarter of 2007. The Asia region showed the lowest growth rate (3.6%) while The Americas region leads the way with growth of 13.4%. Western Europe/Africa (9.8%) and Eastern Europe (9.7%) are both contributing to the recovery. Asia is still

the largest stainless steel producing region with production of 4.2 mmt in the first quarter of this year.

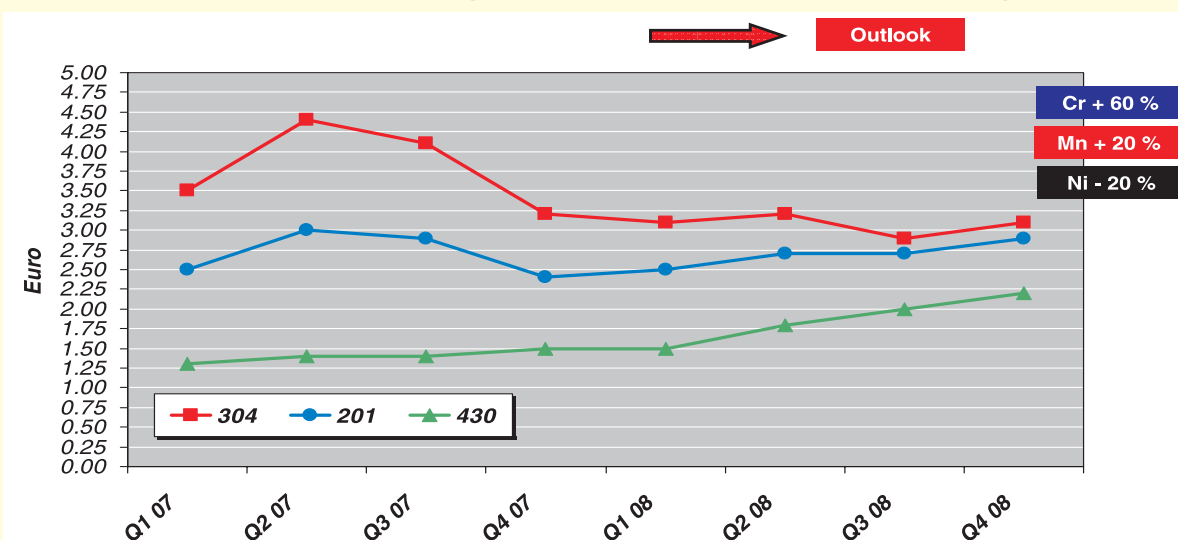
The Table below shows total production for the first quarter of 2008 and comparisons with both the first and last quarters of 2007.

1st Quarter 2008 compared to 4th and 1st Quarters of 2007 (Stainless crude steel production in '000 metric tons)

Region	Quarter		Q-o-Q +/- %	Quarter 1		Q-o-Q +/- %
	4/2007	1/2008		2007	2008	
Western Europe/Africa	2,209	2,426	9.8	2,546	2,426	-4.7
Central and Eastern Europe	87	96	9.7	101	96	-5.4
The Americas	619	702	13.4	749	702	-6.3
Asia	3,997	4,139	3.6	4,188	4,139	-1.2
World total	6,913	7,363	6.5	7,584	7,363	-2.9

Source : International Stainless Steel Forum (ISSF)

The Renaissance of 304? The cost advantage of alternatives is shrinking



BSSA Cor
© Copyright SMR GmbH 2008

Printed with the permission of Steel & Metals Market Research, Austria



News on Opportunities for Stainless Steels

Kolkata's New Metro Project

The Government of India has approved the Rs. 4,678 crore Metro Rail connection between Howrah and Salt Lake in Kolkata. The line will be 13.77 kms and a part of it will run under the Ganges River.

The project will be completed in six-and-a-half years.



Mumbai Metro on Fast Track

The Mumbai Metro Rail Project (MMRP) got a viability gap funding of Rs. 4,500 crore from the Government of India. The total cost of the project is Rs. 22,000 crore and will be completed in three phases. The phases are Versova to Ghatkopar line and the Charkop-Bandra-Mulund line as east-west suburban corridors. The Colaba-Bandra line will be the north-south corridor.

China to supply 16 Metro trains to Mumbai Metro One

A Chinese company has bagged the Rs. 604 crore contract to supply 16 trains for the Versova-Andheri-Ghatkopar corridor. This line is 11.4 Kms and will be operational by 2010.

CSR Nanjing Puzhen Rolling Stock Company is a subsidiary of the Government-owned China South Locomotive and Rolling Stock Corporation.

Kolkata Airport Upgrade Approved

The proposal of the Airports Authority of India to modernize the Kolkata Airport has been approved by the Public Investment Board of the Government of India. The Rs. 1,900 crore proposal now awaits clearance from the Cabinet Committee on Economic Affairs before AAI can start work on the airport.



Boom Time for Airports

By the year 2015, about 78 million square feet of real estate space across retail, commercial and hospitality can be expected in India. This will be as a result of modernisation and upgradation of 47 airport projects, according to a recent report by Cushman & Wakefield.

According to this report, these projects cover a total of approximately 40,000 acres of airport area. Out of the 47 projects, 7 will be green field and 40 will be brown field in tier 1, tier 2 and tier 3 locations across the country.

The Government's expectation is that if these projects are carried through, it will give a face-lift to the locations concerned, many of which are tourist destinations. In 2007 India's international passenger boarding was 25 million. By 2010, this is expected to go up to 45 million.

AAI plans feasibility study for 325 Airstrips.

The Airports Authority of India (AAI) would soon be finalizing a consultant to undertake techno-economic feasibility study for the development of 325 airstrips across the country. The consultant would take three months for the study and would determine what would be the appropriate usage of these airstrips. These strips would help improve regional connectivity and could be utilized by ATR planes.

2nd Domestic Terminal at Chennai Airport

The Central Government has allocated Rs. 1,800 crore for the construction of a second

domestic terminal and extension of the second runway at Chennai Airport. About four aerobridges are being constructed in both the domestic as well as in the international terminal.

Kerala Ports Projects Move Forward

The State Government has given the go ahead for the appointment of Consulting Engineers Pvt. Ltd., as the consultant for Beypore Port and Deolite India Ltd., for the Azhikkal Port. These ports will be developed through public-private-partnership. The development of these ports is expected to give boost to the economic development of the Malabar area of the State.



BHPV gets its first BHEL order

Bharat Heavy Plates and Vessels (BHPV), was taken over by BHEL last month. BHEL has placed an order for the manufacture of 680 MT of boiler components such as drums, headers, riser tubes, panels, coils and piping products. BHPV is being developed as a dedicated centre for industrial boilers, ensuring better delivery in a cost-effective manner.



Welcoming New Members

TARINI ENGINEERING P. LTD



TARINI ENGINEERING P. LTD is a well established industrial group located in Mumbai since 2005, having multi location manufacturing units.

Advance technology machines are installed for producing quality goods. Modern manufacturing techniques and regular quality control system ensures complete customer satisfaction. The management of the company consists of highly qualified personnel who have many years of business experience.

Our staff consists of well qualified and experienced team of Engineers and Professionals in Manufacturing & Testing.

Customer satisfaction is the top most priority at Tarini Engineering P. Ltd. We understand our customer needs and give our best to satisfy the customers.

Tarini Engineering P. Ltd. is very well established in the areas of their activity and is adored by its customers in terms of commitment. The quality of products is unmatched in the market and appeal to all the needful.

Major Areas of specialisation are,

Escalator Cladding

- Cladding of stainless steel sheets (Hairline. #4 or Mirror #8 finish) on outer sheathing of escalators.

- Providing stainless steel etched, or mirror gold finish sheets on outer sheathing of escalators.

- Providing toughened and laminated glass on sides and mirror finish or hairline finish stainless steel sheets on bottom of escalators.

Salient features

- Sheets provided with stiffeners for rigidity. Stiffeners fixed on stainless steel sheets with special purpose structural adhesives.
- Mounting screws invisible.
- Manufactured on CNC machines.

Architectural Railing System

- Architectural railing and balustrade system in stainless steel satin finish or mirror finish with combination of clear toughened glass or stainless steel rods.
- Modular design for ease of installation.

Materials: SS304 / SS316 or Brass

Options: Handrail, Teak Wood, Lucite (Marble or Stone Finish), Balustrades, Combination of Wood & S.S., Lucite & Stainless Steel

Column Cladding

Cladding of columns in: Stainless steel #4, hairline finish sheets.

- Mirror finish stainless steel sheets.
- Perforated stainless steel sheets.

Applications: Malls, Cinema Halls, Public places

Display Stands

We manufacture product display stands in stainless steel as per our standard designs or as per customer's requirement. Stands can be manufactured from square, round or oblong sections of stainless steel or brass.

Finish - Satin or Mirror.

Contact: Mr Rajendra Nardekar, Director, M/s Tarini Engineering Pvt Ltd, 17 B, Waghela Bhuvan, J P Nagar, Road No.1, Opp. Canara Bank, Goregaon (E), Mumbai - 400 060, Tel: 022-6452 6397, Fax: 022-2685 5027, Email: tariniengineering@rediffmail.com, Website: www.tariniengineering.net

Architects & Builders!!!

For stainless steel products used for the Architecture, Building & Construction (ABC) Sector, click "ABC Products" in our homepage at www.stainlessindia.org



RATNAVEER STAINLESS PRODUCTS PRIVATE LIMITED

(A GOVERNMENT RECOGNISED STAR EXPORT HOUSE)

Manufacturer : Exporter of All Types of Stainless Steel Washers

Ratnaveer Stainless Products Pvt. Ltd a privately held company, and a second generation institution has been in this field since the last thirty years, however it has forayed into the organized sector manufacturing since the last five years and since then has made commendable progress. The organization is mainly into exports of stainless steel washers and solar panel installation gadgets to Europe and the world over. The current turnover is in the range of Rs 80 crores annually and growing at a phenomenal pace. Encouraged by the success of the venture and by the existing operational results the management has embarked on a plan to attain aggressive growth trajectory. With this vision and the emerging market scenario in the domestic sector for the product the company has for the purpose carved a distinctive "Architectural Division" within the existing organization. The branding and image building exercises have been initiated and frozen and domestic market launch is slated for July – August 2008. The products of the architectural division will be branded under the "FERRUM" logo and comprise a separate profit centre.

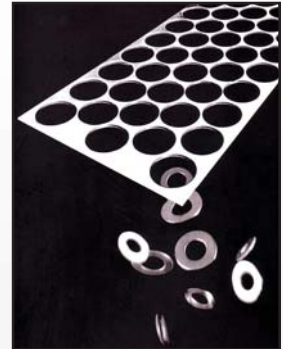
For the purpose of catering to the diverse fields, we at Ratnaveer Stainless have put

up a dedicated 5000 sq. meter plant adjacent to our washer manufacturing facility with the state of the art plant and machinery imported from the best manufacturers abroad. These include high resolution computer controlled water jet cutting machines, high speed sheet metal polishing lines, vertical and horizontal machining centers, and a host of other necessary and essential balancing machineries to give the metal its logical conclusion per the consumers demand. A team of experienced, industry savvy and motivated professional technocrats have been deputed to manage the manufacturing and marketing activities of Ratnaveer Stainless enabling it to realize its corporate vision.

Our current infrastructure is geared to manufacture 3600 Metric Tons of Stainless Steel sheet metal products. We are under constant expansion and up gradation for catering to varied requirements and customer segment. Our entire current produce is exported to customers in the European Union and the United States.

We specialize in producing decorative stainless steel sheets confirming to

International Standards or per customer specifications. The available finishes are in mirror polished, hairline and No4. Sheet thickness vary from 0.7mm to 3mm, width is constant at



1250mm whereas length varies from 2500mm to 6000mm. We are also to shortly introduce etched series besides Physical Vapour Deposited (PVD) titanium plain and etched series in the domestic and middle east market which till now is being imported. Encouraging initial enquiries have been received from parties of repute prior to product launch.

The architectural division is geared to cater to the fabrication requirements of the architectural, building and construction segments. Products include railings, sculpture, bus shelters etc.,

For sales enquiries contact :

Mr Anil K. Pande on 09925247491

or sales@ratnaveer.com at the under mentioned address.



Regd. Office & Works : E-77/121, G.I.D.C, Savli (Manjusar),

Dist : Vadodara 391 775, Gujarat, India

Tel : +91-2667-264594 -95-96, Fax : 91-2667-264593

Email: rspl@ratnaveer.com Web : www.ratnaveer.com



"Stainless Steel: One World – One Market" 2nd International Stainless Steel Symposium in Dubai

Focus Rostfrei and Stainless Steel Focus are holding the **2nd International Stainless Steel Symposium in Dubai in conjunction with ISSDA.**

The registration fee for the 2nd International Stainless Steel Symposium in Dubai, including hotel accommodation for two nights, participation at the conference, as well as the evening event, is between Euro1,530 and Euro1,700, depending on the category of room chosen. It goes without saying - Dubai demands it - that a

sightseeing tour is included in the package!

The Symposium begins on Wednesday evening with a "Get Together" in an informal atmosphere in the hotel, and ends on early Friday afternoon. Five papers by well-known experts from the stainless steel industry will be presented at each of the conference sessions which will take place on Thursday afternoon and Friday morning.

The following experts, known and respected throughout the world, have already agreed to speak at the event:

Chairman: Nigel Ward, Director British Stainless Steel Association (BSSA)

Nicole Kinsman, Technical Director International Molybdenum Association

Andrea Gatti, Executive Vice President Commercial Operations Outokumpu

Pascal Payet-Gaspard, Chairman CEO Arcelor Stainless International
SD Sharma, President (HRCR)

Viraj Profiles Ltd

Heinz H. Pariser

Alloy Metals & Steel Market Research
Ramesh R. Gopal, Executive Director Indian Stainless Steel Development Association (ISSDA)

Luigi Agarini, Managing Director Tad Metals Srl

Special 10% discount for participants from India!!

Log on to : www.Stainless-Symposium-2008.com

Buildings Made Of Recycled Materials
Don't Have To Be Ugly.



The Disney Concert Hall in Los Angeles, California was officially opened in 2003. This US\$275-million project features S31600 stainless steel, an alloy containing 12% nickel. About 60% of the metal content of this steel originated from recycled sources. The Disney Hall is designed to have a useful life of at least 100 years. At the end of that life, the stainless steel will be collected and recycled into new stainless steel.

Stainless Steel: One Of The World's Most Recycled Materials



Edited & Published by **Ramesh R. Gopal**, for and on behalf of the **Indian Stainless Steel Development Association**.
Printed By: **Vee Kay Graphics**, D-14/8 Okhla Phase-I New Delhi, Ph.: 011-26814083/84, E-mail: veekay.graphics@gmail.com