

Airports Authority of India

WELCOMES

For Meet

On

**USES OF STEEL/ STAINLESS
STEEL FOR INFRASTRUCTURE
DEVELOPMENT**

(Airports & Highways)

11th September 2008



An Overview

Infrastructure Growth to Boost Steel Industry



Major Infrastructure Growth Sectors in India

- *Airports*
- *Roads*
- *Bridges*
- *Railways*
- *Ports*
- *Power Generation*
- *Real Estates*



*INTRODUCTION OF AIRPORTS
AUTHORITY OF INDIA*



FUNCTIONS OF AAI

- ◆ Control and management of the Indian air space
- ◆ Provision of communication, navigational and surveillance aids
- ◆ Operation, maintenance and up-gradation of operational areas viz., runways, aprons, taxiways etc.
- ◆ Design, development, operation and maintenance of passenger terminals
- ◆ Development and management of cargo terminals

CURRENT OPERATIONS

AAI manages 127 airports which include:

- **16 International airports***
- **8 Custom airports**
- **24 Civil Enclaves**
- **79 Domestic airports**

**(airports at Delhi & Mumbai have been hived out as a joint venture company where AAI has 26% stake)*

➤ **At 6 airports, AAI provides CNS/ATM facilities only.**

AAI provides air navigation infrastructure and air traffic services over: Total 2.8 million Sq. NM

- Sovereign Air Space of India (approx. 1,048,320 Sq. NM)**
- Oceanic Air Space (approx. 1,757,160 Sq. NM)**

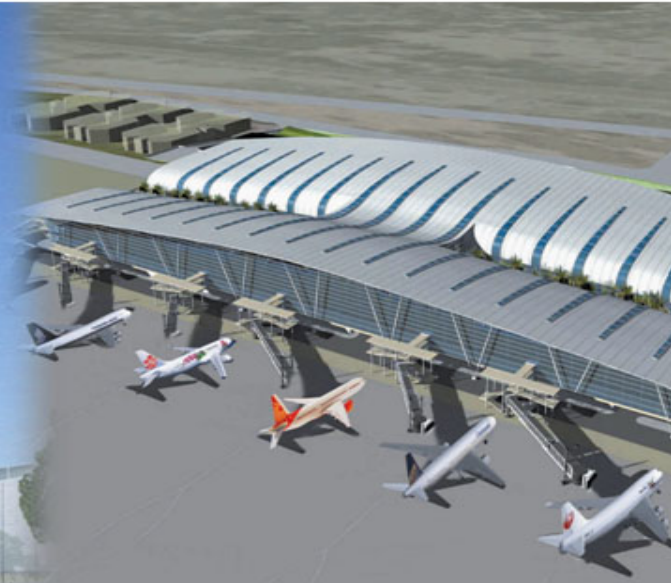
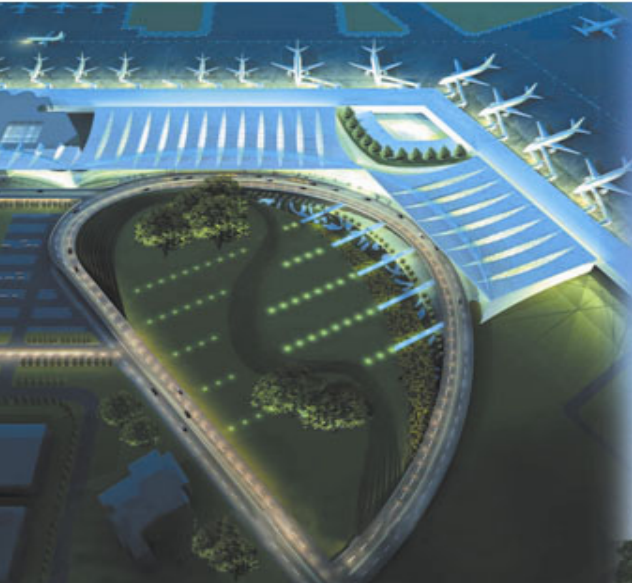


Vision

To be a World – Class Organisation providing leadership in Air Traffic Services and Airport Management and making India a major Hub in Asia Pacific region by 2016.

Mission

To achieve highest standards of safety and quality in Air Traffic Services and Airport Management by providing state-of –the-art infrastructure for total customer satisfaction, contributing to economic growth and prosperity of the nation.



AIRCRAFT MOVEMENTS

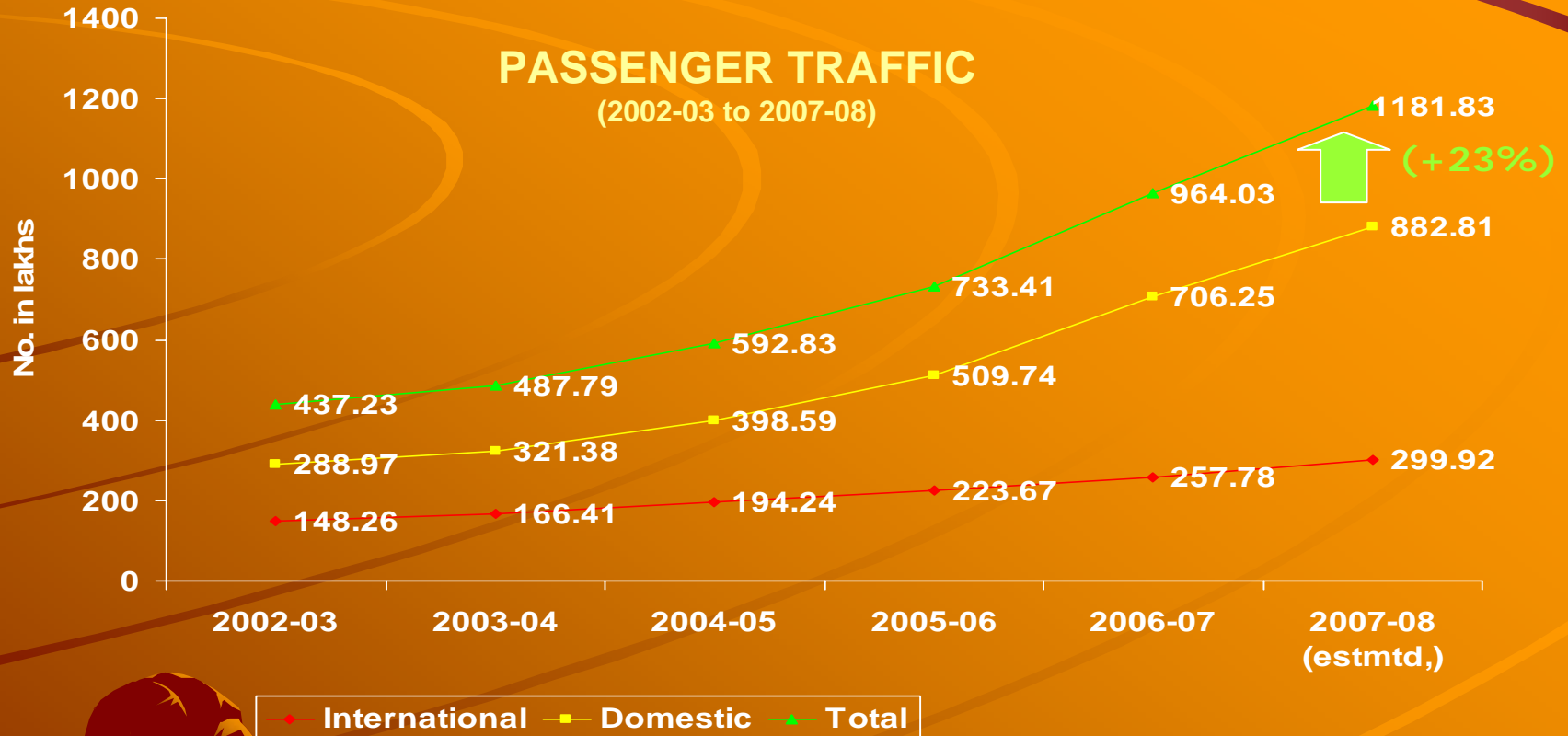
(2002-03 to 2007-08)



YEAR	International		Domestic		Total	
	A/c Movements (in '000)	%age change	A/c Movements (in '000)	%age change	A/c Movements (in '000)	%age change
2002-03	116.44	7.99	444.21	10.47	560.65	9.94
2003-04	136.19	16.96	505.20	13.72	641.39	14.40
2004-05	163.27	19.88	554.32	9.72	717.59	11.88
2005-06	190.88	16.90	647.34	16.81	838.22	16.83
2006-07	215.57	12.90	862.02	33.2	1077.59	28.6
2007-08	245.75	14.00	1077.53	25.00	1323.28	22.80

PASSENGER TRAFFIC

(2002-03 to 2007-08)



YEAR	International		Domestic		Total	
	No.in lakhs	%age change	No.in lakhs	%age change	No.in lakhs	%age change
2002-03	148.26	8.8	288.97	9.6	437.23	9.4
2003-04	166.41	12.2	321.38	11.2	487.79	11.6
2004-05	194.24	16.7	398.59	24.0	592.83	21.5
2005-06	223.67	15.15	509.74	27.90	733.41	23.72
2006-07	257.78	15.20	706.25	38.60	964.03	31.4
2007-08*	299.92	16.00	882.81	25.00	1181.83	22.60

CARGO

(2002-03 to 2007-08)



International Domestic Total

(in '000 tonnes)

YEAR	International		Domestic		Total	
	Quantity	%age change	Quantity	%age change	Quantity	%age change
2002-03	646.1	15.3	333.22	13.3	979.35	14.6
2003-04	693.2	7.3	375.44	12.7	1068.66	9.1
2004-05	823.6	18.8	456.66	21.6	1280.27	19.8
2005-06	920.15	11.72	483.83	5.94	1403.98	9.66
2006-07	1021.26	11.0	529.64	9.50	1550.90	10.5
2007-08	1174.45	15.0	587.90	11.0	1762.35	13.63

Year	International	Domestic	Total
2000-01	631,558	2,054,842	2,686,400
2001-02	590,445	1,970,857	2,561,302
2002-03	585,236	2,241,558	2,826,794
2003-04	591,038	2,499,815	3,090,853
2004-05	637,355	2,857,209	3,494,564
2005-06	742,247	3,664,548	4,406,795
2006-07	805,191	5,187,867	5,993,058
Growth @	12.00%	20.00%	19.00%
2007-08	901,814	6,225,440	7,127,254
2008-09	1,010,032	7,470,528	8,480,560
2009-10	1,131,235	8,964,634	10,095,870
2010-11	1,266,984	10,757,561	12,024,545
2011-12	1,419,022	12,909,073	14,328,095
Growth @	10.00%	15.00%	14.50%
2012-13	1,560,924	14,845,434	16,406,358
2013-14	1,717,016	17,072,249	18,789,266
2014-15	1,888,718	19,633,087	21,521,805
2015-16	2,077,590	22,578,050	24,655,639
Growth	* Saturation year		
Last year	8.50%	41.60%	36.00%
Last two years	12.40%	34.70%	31.00%
Last three years	10.90%	27.60%	24.70%
Last four years	8.30%	23.30%	20.70%
Last five years	6.40%	21.40%	18.50%

AAI's Strategy

◆ **By 2010**

- Expansion and Modification of Chennai and Kolkata Metro airports
- Expansion and Development of 35 non-metro airports
 - ◆ 24 airports by March 2009
 - ◆ 11 airports by March 2010
- Integration of all airports using Dedicated Satellite Network Data Link
- Upgradation of Ground Based Navigation to Satellite Based Navigation System

◆ **Beyond 2010**

- Expansion and Development of other 45 airports with modern facilities



24 Airports being completed by March 2009

1. Agra
2. Agatti
3. Ahmedabad
4. Amritsar
5. Aurangabad
6. Bhopal
7. Bhubaneswar
8. Chandigarh
9. Dehradun
10. Indore
11. Jaipur
12. Jammu
13. Khajuraho
14. Lucknow
15. Madurai
16. Mangalore
17. Nagpur
18. Pune
19. Ranchi
20. Trichy
21. Trivandrum
22. Udaipur
23. Varanasi
24. Vizag



11 more Airports to be completed by March 2010

1. Agartala

2. Coimbatore

3. Dimapur

4. Goa

5. Guwahati

6. Imphal

7. Patna

8. Port Blair

9. Raipur

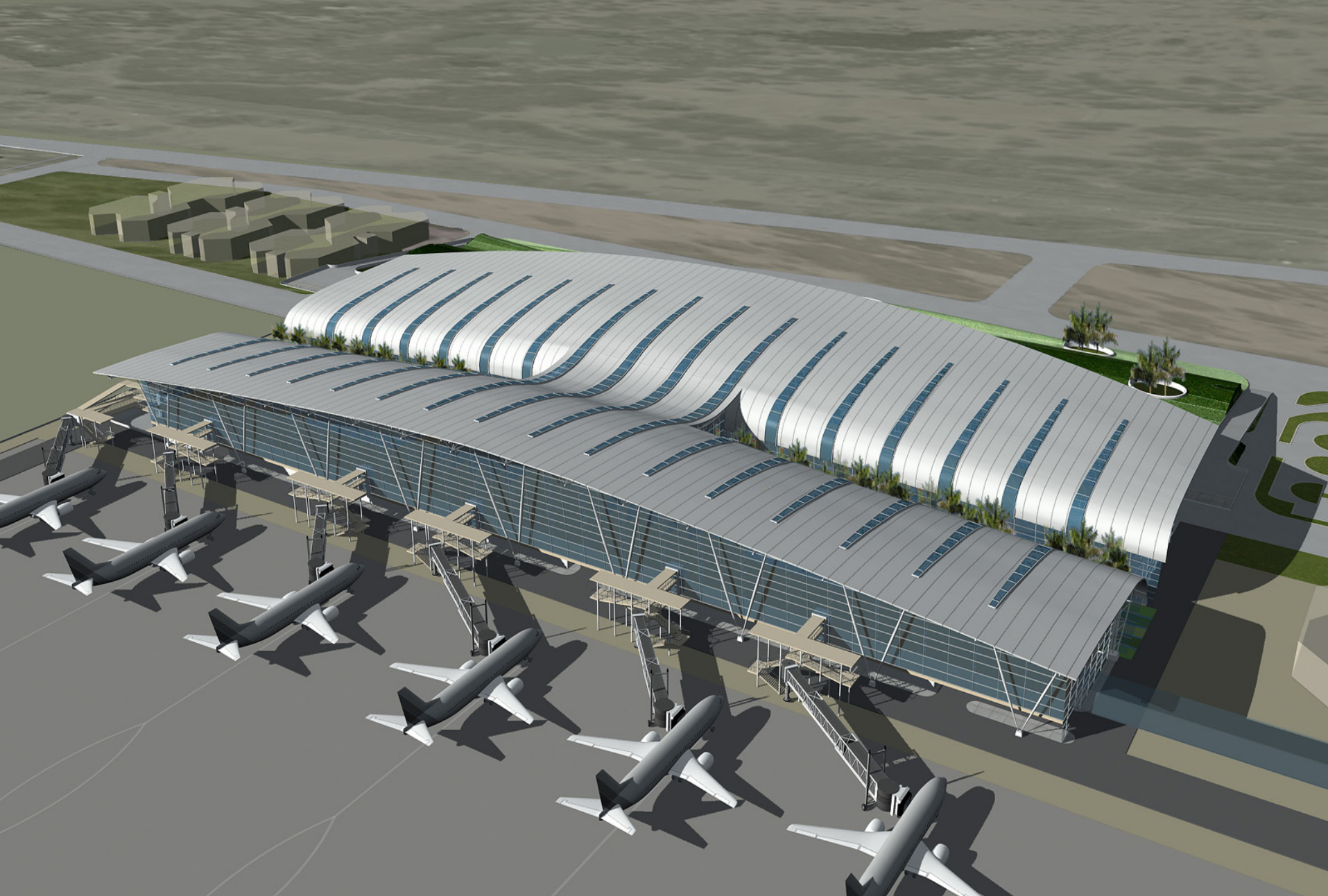
10. Rajkot

11. Vadodara





नेताजी सुभाष चंद्र बोस अंतर्राष्ट्रीय विमानपत्तन



Air side view of Domestic Terminal - Chennai



CITY SIDE VIEW SHOWING
ELEVATED DEPARTURE



DEPARTURE CONCOURSE
CHECK IN AREA

PORBANDAR AIRPORT

city side view



PUNE AIRPORT

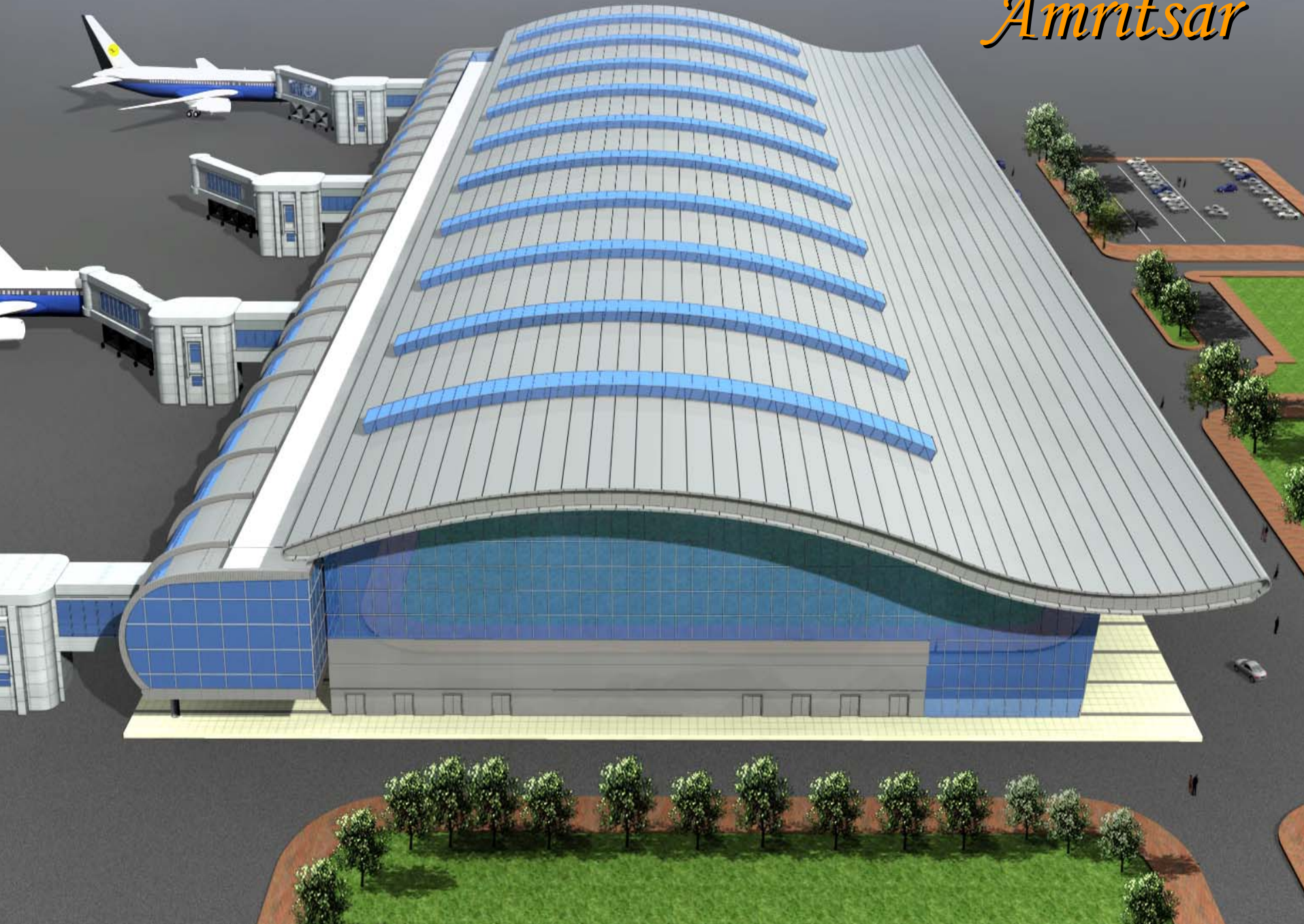
city side view

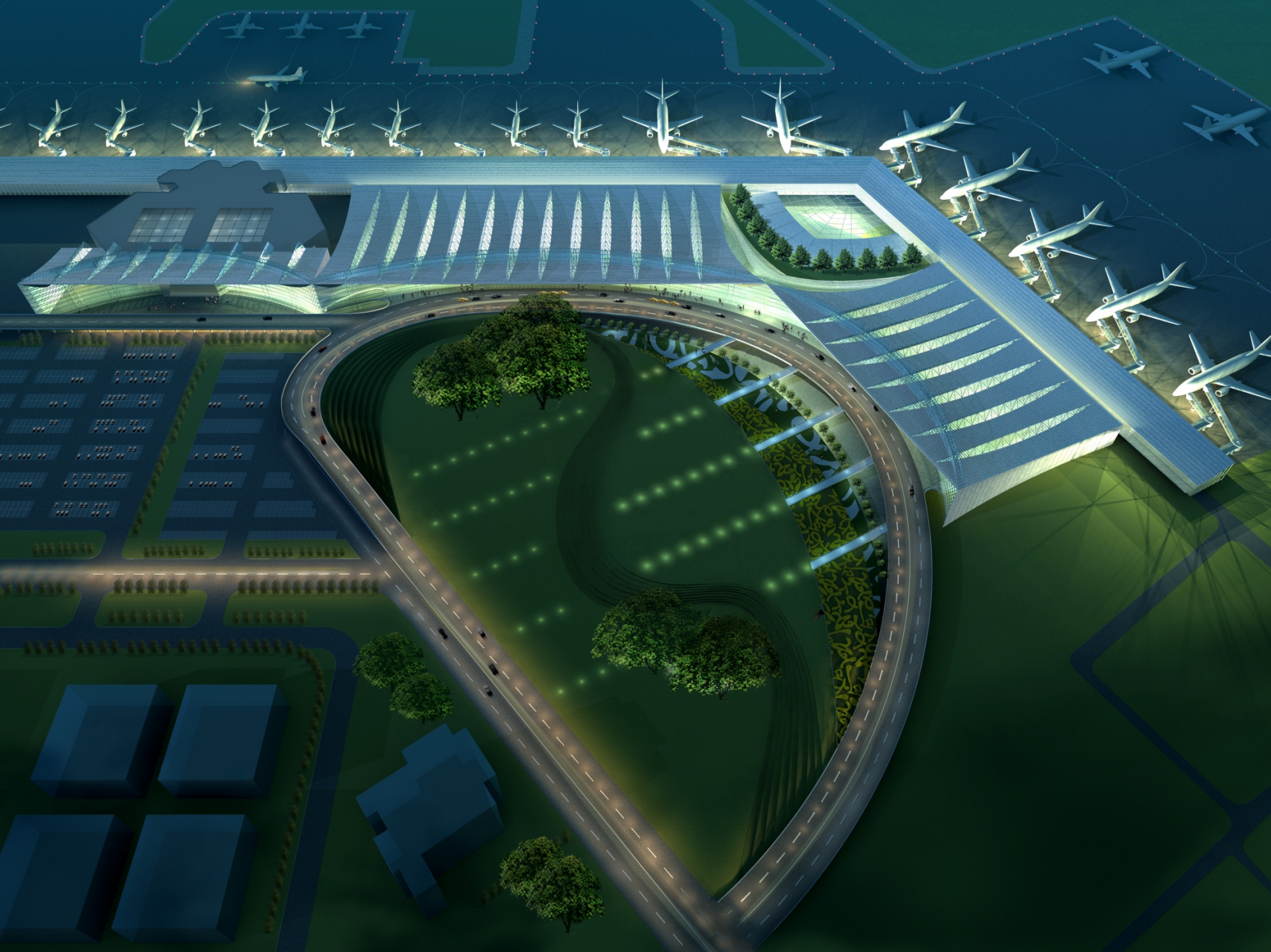


Mangalore

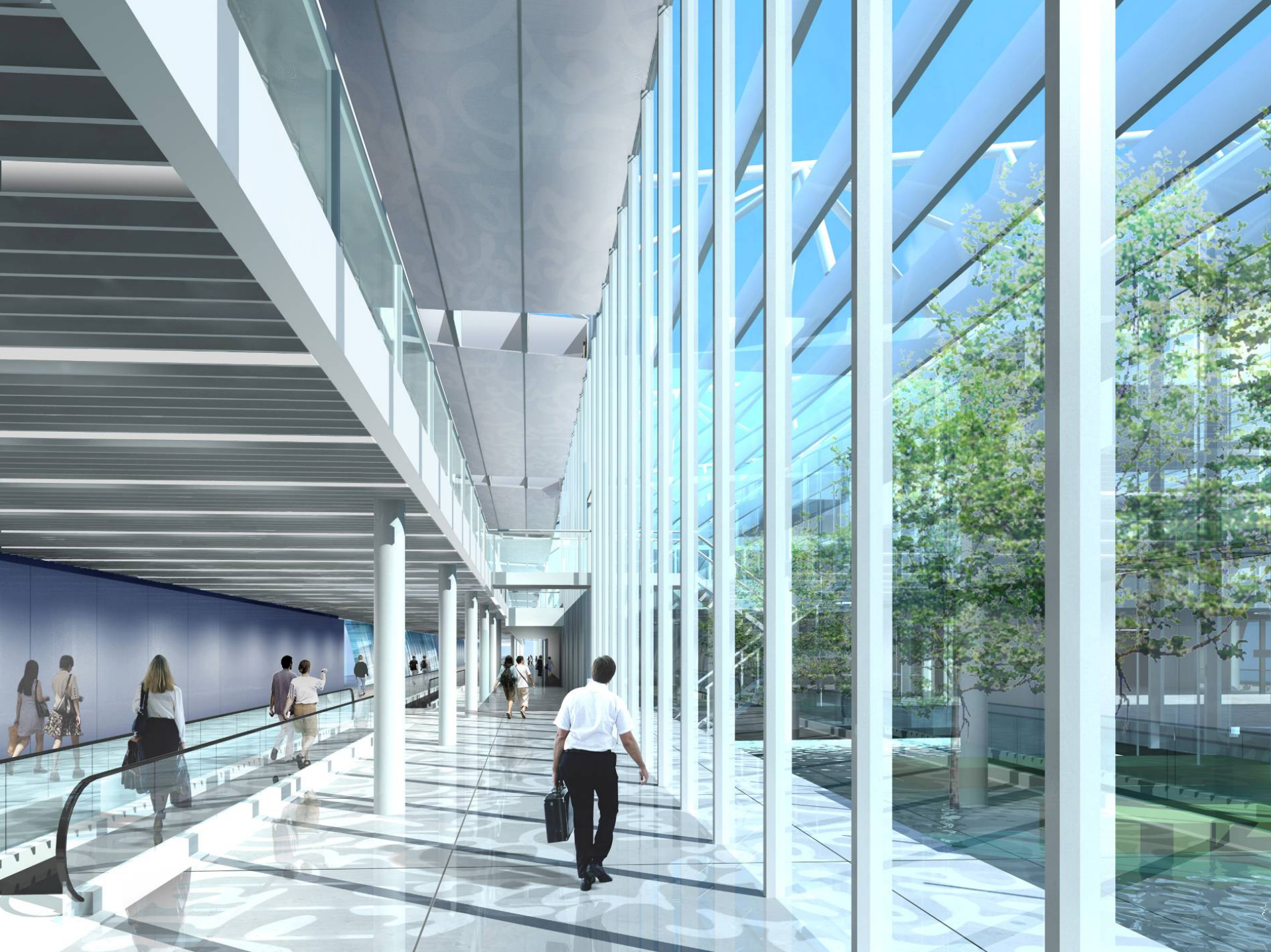


Amritsar









PROPOSED CONCOURSE, FAÇADE OF DOMESTIC TERMINAL



WORLD CLASS AEROBRIDGES AND VERTICAL AIRCONDITION SYSTEM





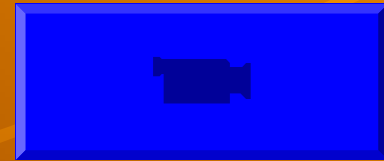
*USES OF STAINLESS STEEL IN
AIRPORT TERMINALS*



*USES OF STAINLESS STEEL IN
METRO STATIONS*



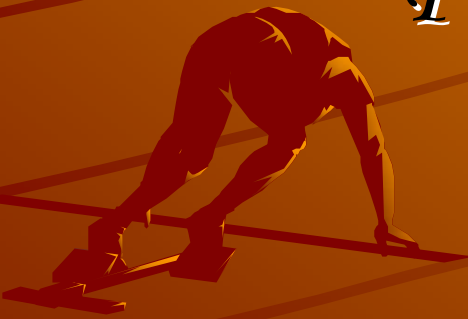
Walkthrough of Kolkata Airport



- ◆ It was estimated that an investment of over 9300 million US \$ (Rs.40,000 crores) is required for development of airport infrastructure in the country.
- ◆ Investment on steel-15-20%



*NATIONAL HIGHWAY DEVELOPMENT
PROGRAM OF NATION*



NHDP & Other NHA I Projects

(Status :29th February , 2008)

	NHDP					Port Connectivity	Others	Total by NHA I
	GQ	NS - EW Ph. I & II	NHDP Phase III	NHDP Phase V	NHDP Total			
Total Length (Km.)	5,846	7,300+	12109	6,500	31755	380	962^	33097
Already 4-Laned (Km.)	5,650**	1962	330	-	7,942	169	425	8536
Under Implementation (Km.)	196	4359	1745	1030	7330	205	517	8052
Contracts Under Implementation (No.)	25	147+	31	7	210	8	15	233
Balance length for award (Km.)	-	821^	10,034^	5470	16,325	6	20	16,351

NHDP

◆ TOTAL INVESTMENT - 1,72,000 cr.
-17,20,000 mn

◆ STEEL COMPONENT
@7% OF INVESTMENT - 12040 cr.
-1,20,400mn

A silhouette of a runner in starting blocks, positioned on the left side of the slide, partially overlapping the text.

Jaipur- Kishangarh



Maharashtra Border - Belgaum



Naini Bridge



Celtic Gateway Bridge, Holyhead, UK



Progress Photographs (Dankuni - Kharagpur)



Rupnarayan Bridge at km 73.486



Rupnarayan Bridge at km 73.486

Completed Section of Palsit-Dankuni (Durgapur Expressway)



Km. 621.000

*FLYOVER CONSTRUCTED
MAXIMIZING THE USES OF STEEL*



DURGAPUR
STEEL PLANT



ইস্পাত



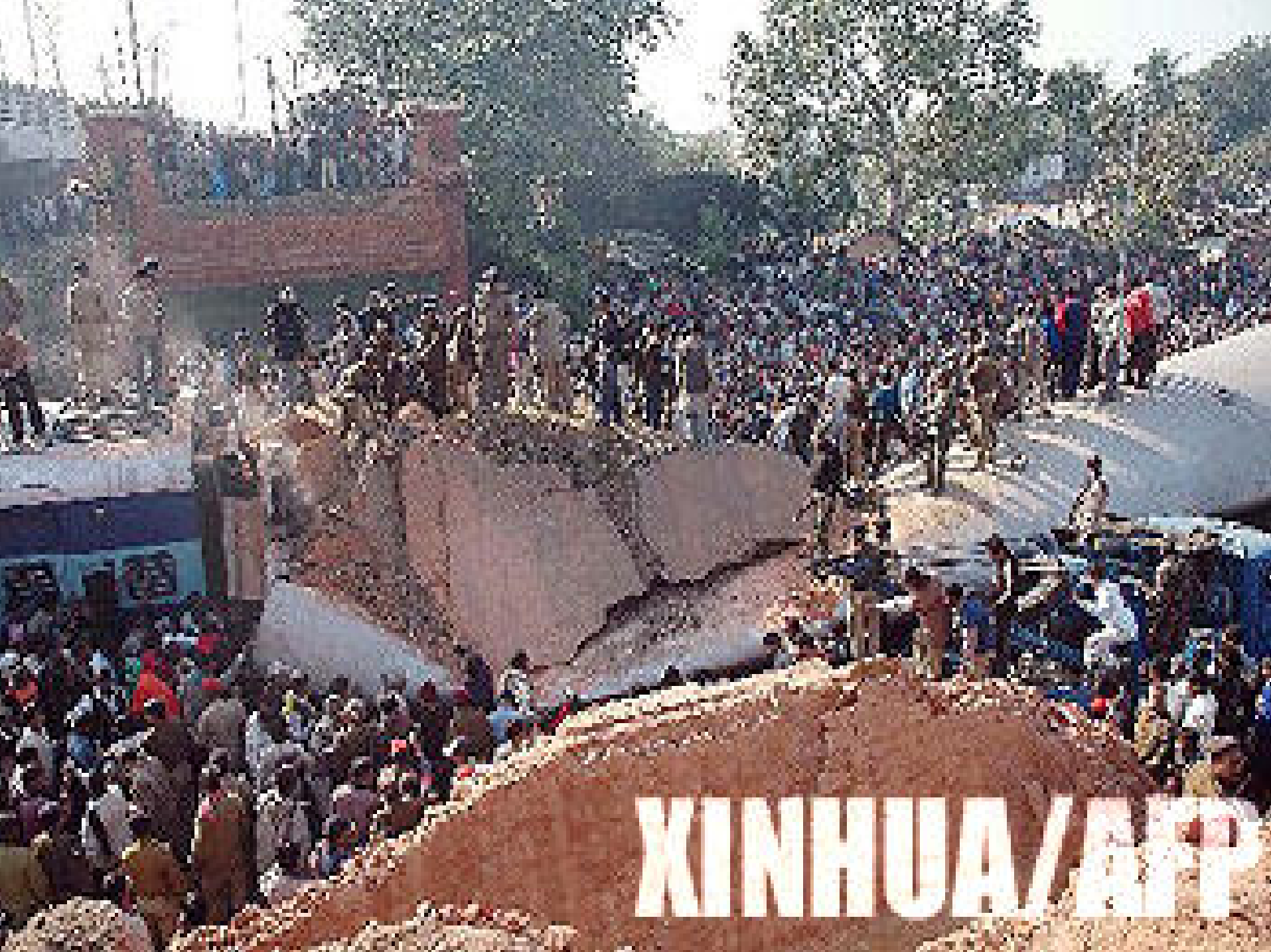




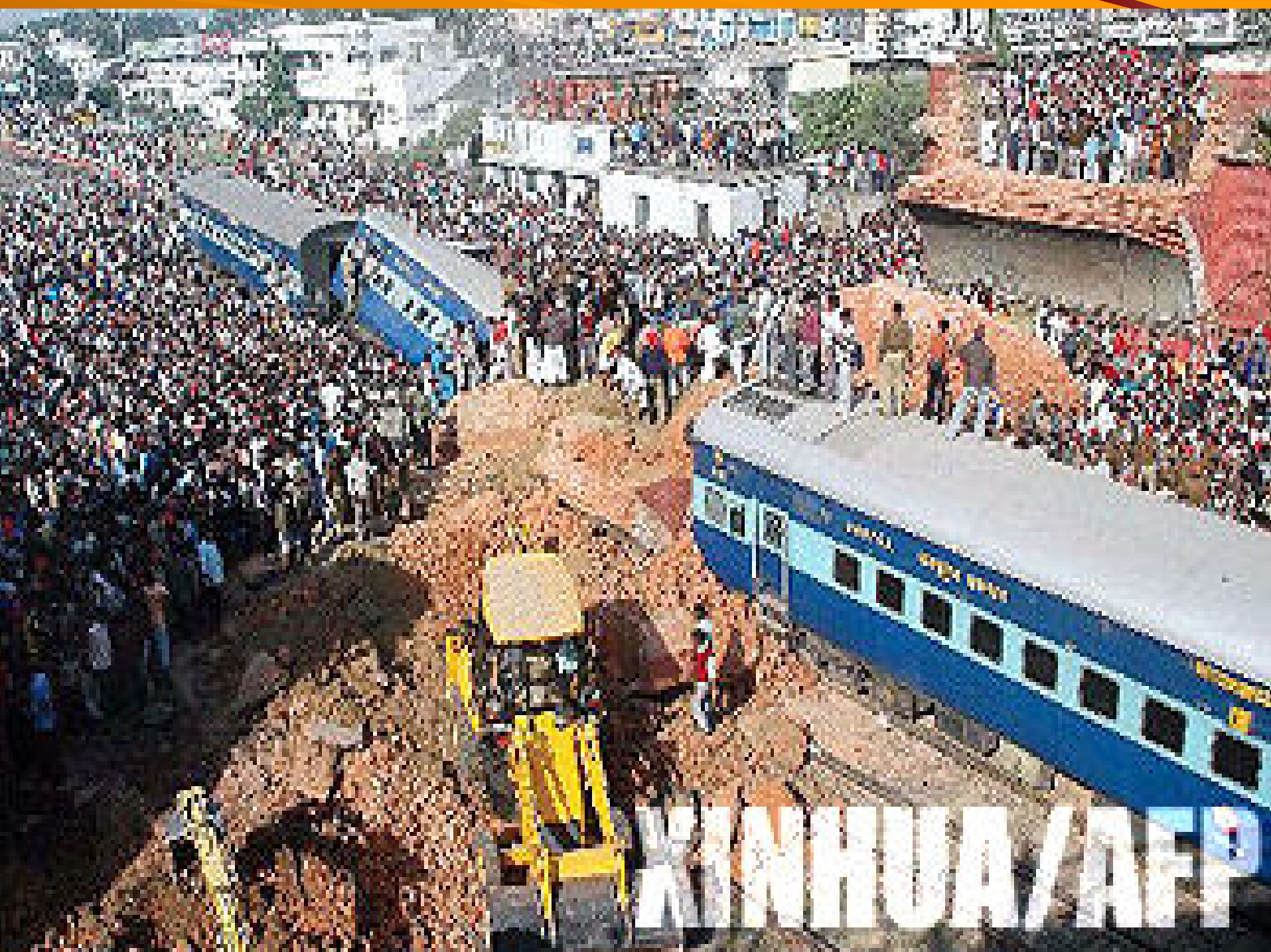


*RAIL ACCIDENT DUE TO
COLLAPSE OF FOOT OVER
BRIDGE*





XINHUA/ATP



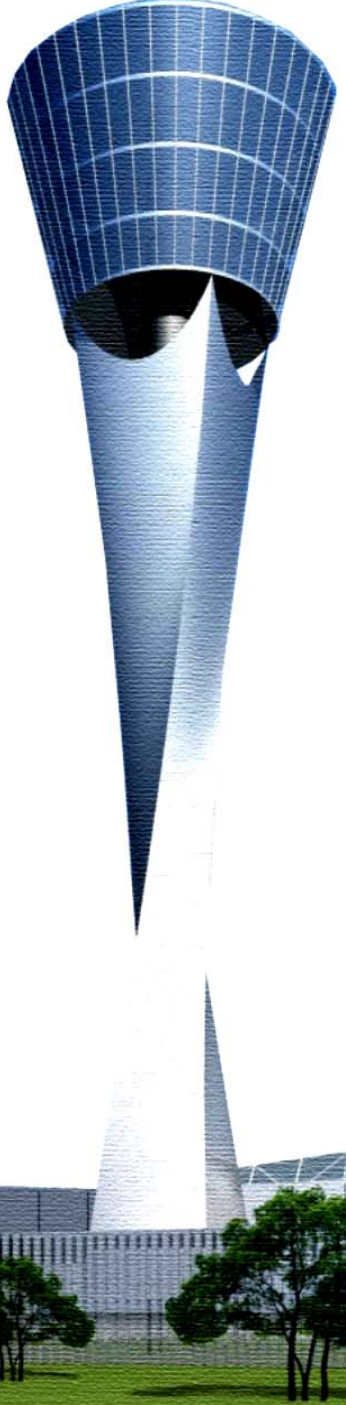
XINHUA/AFIP



EXPECTATION FROM STEEL INDUSTRY

- Steel Manufacturer to co-ordinate with Client from design stage for optimizing the design parameters and ensure timely availability of sections.
- Steel Industry to gear up for manufacturing of High Grade Steel, long Spans and bigger Sections.
- The manufacturing to keep pace with the demand of steel for controlling the price .





*Thanks for your kind
attention*

